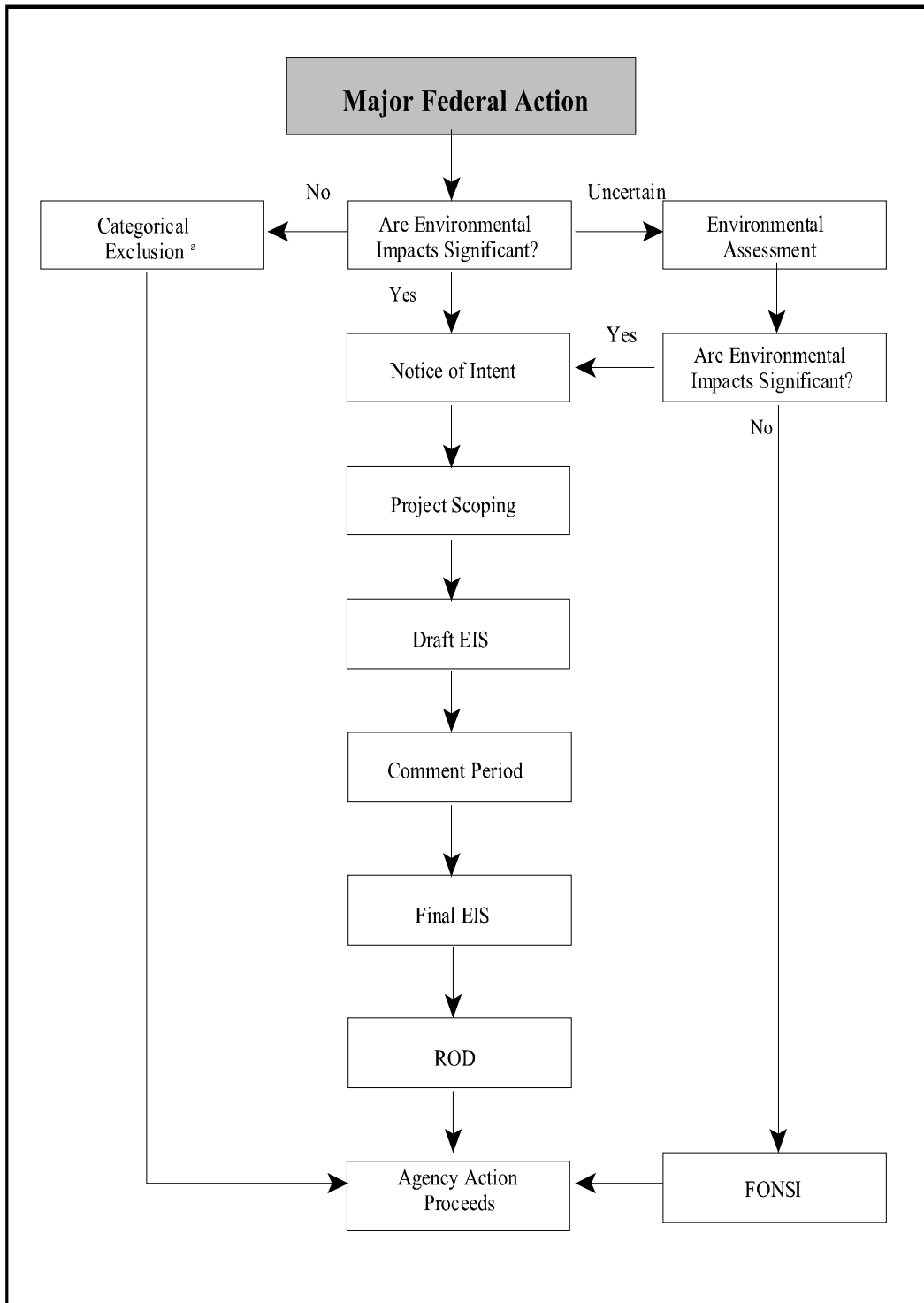


Figure 1. Overview of the NEPA Process



Source: 40 C.F.R. §§ 1501-1506.

- a. If an action is not specifically identified as a categorical exclusion in the respective agency’s NEPA regulations, it may still require an environmental assessment to confirm that its impacts are not significant. An agency may also choose to prepare an environmental assessment, even though it is not required to do so, to aid in its compliance with NEPA.